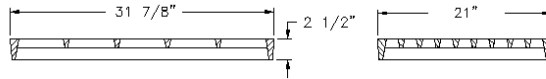


### 7738 RECTANGULAR INLET GRATE

Heavy Duty  
Grate only  
Approximate 345 sq. in. open area

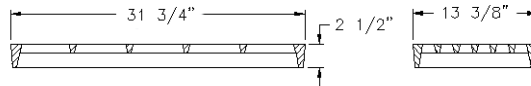
EJ recommends the use of iron frames  
providing support to entire bearing surface



### 7739 RECTANGULAR INLET GRATE

Heavy duty  
Grate only  
Approximate 196 sq. in. open area

EJ recommends the use of iron frames  
providing support to entire bearing surface



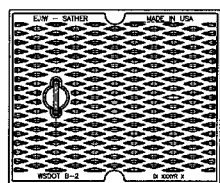
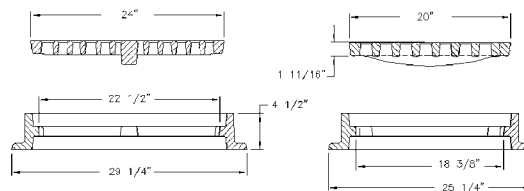
### 7750 FRAME & GRATE

Heavy duty  
Ductile iron grates  
Reversible frame

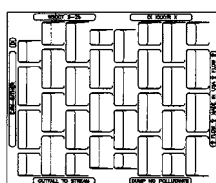
Options  
Ductile iron cover  
Drop handle  
Diagonal and center bolting  
Adjusting risers  
ADA grade — V-7397



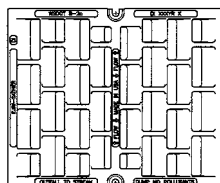
Shown with  
Type M1 Grate  
Approx. 185 sq. in. open area



Type A Solid Cover



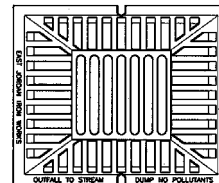
Type M2 Vane Grate  
Approx. 216 sq. in.  
open area



Type M3 Bi-directional  
Grate  
Approx. 216 sq. in.  
open area



Type M5 ADA Grate  
Approx. 152 sq. in.  
open area



Type O Beehive Grate  
Approx. 229 sq. in.  
open area